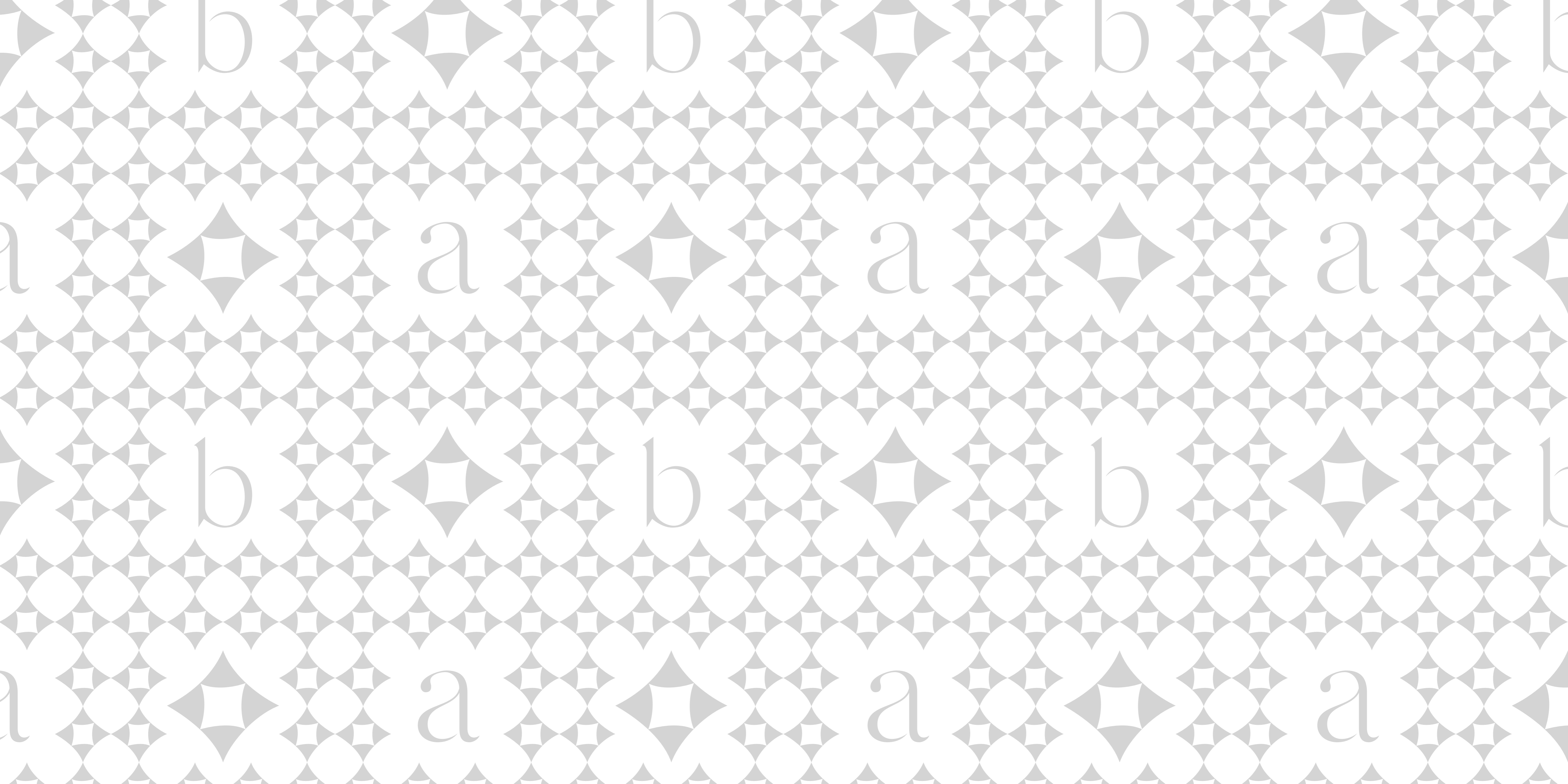


bablanc. ♦





© 2023 The Trustees of the British Museum
All rights reserved. No part of this publication may be reproduced without the prior written permission of the Trustees of the British Museum.

Who We Are

At Bablanc, our mission goes beyond creating furniture; we curate experiences that transform environments and elevate everyday living. Each piece in our collection embodies enduring sophistication and superior craftsmanship, designed to inspire those who interact with them.

What sets us apart is our relentless pursuit of innovation and the use of exclusive, high-quality materials. We believe furniture should tell a story, becoming legacy pieces that blend artistic expression with practicality, bringing grandeur to any space.

Understanding that each space is as unique as its inhabitants, we offer bespoke services tailored to our clients' visions. Our team of designers and artisans collaborates closely with customers to bring their dream furnishings to life, ensuring every detail is perfected.

About the Founder

Bablanc is the vision of Pedro Barbosa, an entrepreneur with a passion for artistic craftsmanship and innovative design. His deep appreciation for the harmony between form and function led him to create a brand that bridges the gap between art and furniture. Pedro's dedication to excellence and his commitment to pushing the boundaries of design are the cornerstones upon which Bablanc was built. Under his leadership, Bablanc continues to inspire elegance, creativity, and a timeless sense of luxury in every piece.





“

Magritte is the most important thing
in the world of art.

”

René Magritte



POSITIS SIGNIS ET ANI

CLEMENTIS IVSSU CLEMENTIS XIII PONT

Avant Garde Living

Our Collection

From the sleek lines of modern minimalism to the intricate patterns of classical embellishment, our diverse range of products promises something unique for every taste and space.

Whether it's the living room, the dining area, or the bedroom, Bablanc's pieces are designed to make a statement that is both sophisticated and impactful.

Every piece narrates a story of craftsmanship infused with cultural richness, designed to resonate with both traditional and contemporary aesthetics.



“

It is a very old saying that says, the
saying is in the world, in the world

”

S O F A

Dada



Draped in a rich tapestry of textures, where select fabrics meet the suppleness of premium leather, the Dada sofa offers a tactile odyssey that overturns conventional expectations. Adorned with lustrous gold stainless steel, it presents a stroke of opulence that balances Dadaism's inherent rawness.



“

Il est très agréable, surtout avec les enfants, et il est très confortable. Il est très pratique, surtout avec les enfants, et il est très confortable. Il est très pratique, surtout avec les enfants, et il est très confortable.

”





Name
Sofa Dada

Structure
Wood covered with various densities of polyurethane and fibre.
Armrest with golden stainless steel profile and black leather covering.
Decorative accessories in golden stainless steel.

Upholstery
Pierre Frey - Arlina.

Personalization
Available.

Dimensions
(cm) W: 344 | D: 100 | H: 70
(in) W: 135,4 | D: 39,4 | H: 27,6

S O F A

Davidson



Inspired by the iconic Harley-Davidson chopper, the Davidson sofa captures the essence of freedom, boldness, and timeless style. Just as the chopper's handlebars are a signature feature of its design, the Davidson sofa embraces sleek, confident lines that echo the spirit of adventure and the open road.





THE BOLD RIDE OF

Comfort

With its strong silhouette and subtly curved form, the sofa blends power and elegance, inviting you to relax in a space where comfort meets daring design.

Like the chopper itself, the Davidson Sofa makes a statement in any room. It brings together the thrill of the ride with the calm of modern living, offering a seat that is not only functional but a symbol of independence and style. In any setting, it becomes the centerpiece, transforming your space into one of dynamic elegance, where moments of rest are charged with the spirit of the open road.





Name
Sofa Davidson

Structure
Wood covered with various densities of polyurethane and fibre.

Upholstery
Dedar - Karakorum.

Personalization
Available.

Dimensions
(cm) W: 285 | D: 105 | H: 90
(in) W: 112,2 | D: 41,3 | H: 35,4

S O F A

Frog



The Frog Sofa is a playful reinterpretation of the relaxed and peculiar posture of a frog. Drawing inspiration from the effortless way these animals settle into their surroundings, this sofa brings a unique blend of charm and comfort to any space.





PLAYFUL COMFORT

Inspired by Nature

With its organic curves and soft, inviting silhouette, the Frog Sofa mirrors the natural fluidity of a frog's form. Its design embodies the relaxed elegance of nature, offering not just a seat, but an experience of cozy tranquility.

Designed to be both a statement piece and a sanctuary of comfort, the Frog Sofa invites you to unwind, embracing its blend of minimalist style and luxurious coziness. Perfect for any modern living space, it combines the lighthearted charm of nature with contemporary elegance.





Name
Sofa Frog

Structure
Wood covered with various densities of polyurethane and fibre, with baseboard in walnut wood.

Upholstery
Dedar - Salicornia .

Personalization
Available.

Dimensions
(cm) W: 260 | D: 112 | H: 80
(in) W: 102,4 | D: 44,1 | H: 31,5

S O F A

Remi



Constructed with a dedication to longevity, every stitch of Belsuede and plank of wood in the Remi has been chosen for endurance and beauty—a symbol of the lasting impact of good design and great stories.





AN ODE TO

Visual Storytelling

In the Remi Sofa, you'll find a celebration of narrative brilliance, inspired by the creative genius Hergé, whose tales of Tintin captivated hearts and ignited imaginations.

The silhouette of the Remi Sofa is as timeless as the stories that inspired it, with each line and curve inviting you to create your own tales of intrigue and comfort. Sit back, relax, and let the spirit of adventure and creativity that defined Hergé's work envelop you in the Remi Sofa—your sanctuary for relaxation and reverie.





Name

Sofa Remi

Structure

Wood covered with various densities of polyurethane and fibre.

Upholstery

Dedar - Belsuede.

Personalization

Available.

Dimensions

(cm) W: 280 | D: 110 | H: 92
(in) W: 110,2 | D: 43,3 | H: 36,2

ARMCHAIR

Kevin



Drawing inspiration from the mesmerizing realm of French figure skating and particularly the poise of Kevin Aymoz, this chair captures the effortless flow and exquisite finesse of his skating.





Name

Armchair Kevin

Structure

Wood covered with various densities of polyurethane and fibre.
Golden stainless steel profile.

Upholstery

Velvet fabric.

Personallization

Available.

Dimensions

(cm) W: 80 | D: 80 | H: 70
(in) W: 31,5 | D: 31,5 | H: 27,6

ARMCHAIR

Frog



Its gently curved lines reflect the fluidity of natural shapes, inviting you to sink into its embrace, just as a frog settles into its surroundings. Upholstered in soft, luxurious fabric, the armchair offers a tactile experience of relaxation, while its solid, sleek base anchors the design in modern sophistication.



THE PLAYFUL

Elegance of Nature

Sitting in the Frog Armchair feels like a harmonious retreat into nature, where design and relaxation unite. It provides a serene space for contemplation while enhancing any room with its distinctive, organic silhouette.

Inspired by the whimsical yet relaxed posture of a frog, the Frog Armchair is a delightful interpretation of nature's organic forms. Embracing the charm and ease with which frogs rest, this armchair brings together a sense of playful design and ultimate comfort.



Name
Armchair Frog

Structure
Wood covered with various densities of polyurethane and fibre. Baseboard in walnut wood.

Upholstery
Dedar - Salicornia.

Personalization
Available.

Dimensions
(cm) W: 120 | D: 95 | H: 80
(in) W: 47,2 | D: 37,4 | H: 31,5

ARMCHAIR

Rondó



Clad in sumptuous fabric, the Rondó invites a symphonic touch, with its design tailored to cradle and captivate. The sheen of polished gold stainless steel acts as a recurring visual motif, threading through the armchair with a brilliance that conjures images of enduring grandeur.

“

في هذا العالم المتغير، نحن بحاجة إلى
مقاعد مريحة، يمكنها توفير الدعم
والراحة التي نحتاجها في كل لحظة.

“





THE SYMPHONY OF

Seating Armchair

**Within the opulent theater of design,
where the essence of shape harmonizes
with purpose, the Rondó armchair
claims the limelight.**

Echoing the structure of its musical counterpart, this armchair offers a luxurious repose — a tribute to the enduring elegance that characterizes the rondo form. Its predominant theme of sophistication resonates throughout the design, accentuated by notes of style and opulence. The brilliance of brass emerges as a recurring visual motif, intertwining through the armchair with a radiance that evokes the timeless grandeur of music.

Name

Armchair Rondó

Structure

Wood covered with various densities of polyurethane and fibre. Polished brass profile.

Upholstery

Dedar - Salicornia.



Personalization

Available.

Dimensions

(cm) W: 90 | D: 90 | H: 70

(in) W: 35,4 | D: 35,4 | H: 27,6



CHAIR

Passerelle



To be seated in the Passerelle is to embrace unity, to partake in the shared narratives just as the Pont des Arts bears the weight of countless passersby. It stands as a homage to artful construction and thoughtful design that elevates beyond simple utility.

“

Il est de la même famille que le fauteuil
et le tabouret. Le fauteuil est un fauteuil
et le tabouret est un tabouret.

”





Bablanco



THE BRIDGE OF

Bond Dining Chair

Emerging from the romantic core of Paris, where the Seine gracefully meanders beneath the Pont des Arts, the Passerelle dining chair is a tangible ode to the essence of connectivity that this storied bridge symbolizes.

Within the intimate quarters of your dining room, the Passerelle chair is not merely for repose, but a beacon of the connections we cultivate throughout our lives, the communal feasts that evolve into communal tales, and the discourses that outlast the final course.



Name
Dining Chair Passerelle

Structure
Golden stainless steel,
wood covered with various
densities of polyurethane
and fibre.

Upholstery
Pierre Frey - Okinawa.

Personalization
Available.

Dimensions
(cm) W: 60 | D: 57 | H: 78,5
(in) W: 23,6 | D: 22,4 | H: 30,3

CHAIR

Monceau



Inspired by the exquisite charm of Parc Monceau, a haven of Parisian sophistication and art, the Monceau dining chair captures the essence of refined luxury. This chair echoes the timeless beauty of one of Paris' most prestigious gardens, where elegance and art coexist harmoniously.



REFINED

Elegance of Monceau

Crafted with a solid wood frame, the chair's design reflects the classical Parisian architecture seen in the park's structures, while lacquered details evoke the elite atmosphere of the garden's surroundings.

The soft upholstered seat and backrest offer unparalleled comfort, while the open-back design imparts a sense of airiness and modern elegance. Whether placed in a contemporary dining room or a more traditional setting, the Monceau chair serves as an invitation to experience the quiet grandeur of Paris' most serene spaces.





Name
Dining Chair Monceau

Structure
Wood coated with different densities of polyurethane and fibre, lacquered in black.

Upholstery
Dedar - Salicornia.

Personalization
Available.

Dimensions
(cm) W: 62 | D: 56 | H: 79
(in) W: 24,4 | D: 22,0 | H: 31,1

CHAIR

Adam



Inspired by Michelangelo's iconic fresco The Creation of Adam, which graces the ceiling of the Sistine Chapel, the Adam dining chair reflects a moment of divine craftsmanship.



THE CREATION OF

Elegance

The luxurious fabric upholstery on the seat and backrest offers supreme comfort, while the carefully contoured armrests mirror the outstretched hands of the fresco, embodying a subtle connection between form and function.

Gold accents elevate the design, infusing it with a sense of timeless opulence. Whether in a formal dining room or a casual space, the Adam chair invites you to experience the essence of creation—a moment of relaxation, connection, and artistic beauty.



Name
Dining Chair Adam

Structure
Wood coated with different densities of polyurethane and fibre, golden stainless steel.

Upholstery
Pierre Frey - Mungo.
Edar - Adamo.

Personalization
Available.

Dimensions
(cm) W: 58 | D: 61 | H: 83
(in) W: 22,8 | D: 24,0 | H: 32,7

CHAIR

Rondó



Inspired by the cyclical beauty of a musical rondo, the Rondó Dining Chair is a celebration of recurring themes in design, echoing the rhythm and flow of a well-composed musical piece.

“

Il est important de trouver un équilibre entre le confort et l'esthétique. Le Bablan est conçu pour offrir une expérience unique de confort et de style. Les matériaux utilisés sont de haute qualité et les finitions sont soignées. Le design est épuré et moderne, s'intégrant parfaitement dans un intérieur contemporain.

”





Bablanco



A HARMONIC

Fusion of Design

The chair's curves and contours are reminiscent of the smooth, flowing lines in a melody, with its backrest and armrests arranged in a rhythmic sequence that echoes the repetition and variation found in musical compositions.

Upholstered in soft, luxurious fabric, the Rondó offers not only visual appeal but also an immersive experience of comfort.

Golden stainless steel accents add a timeless touch of refinement, making the piece both modern and classic.



Name
Dining Chair Rondó

Structure
Wood coated with varying densities of polyurethane and fibre, based coated with leather. Brass profile.

Upholstery
Dedar - Salicornia.

Personalization
Available.

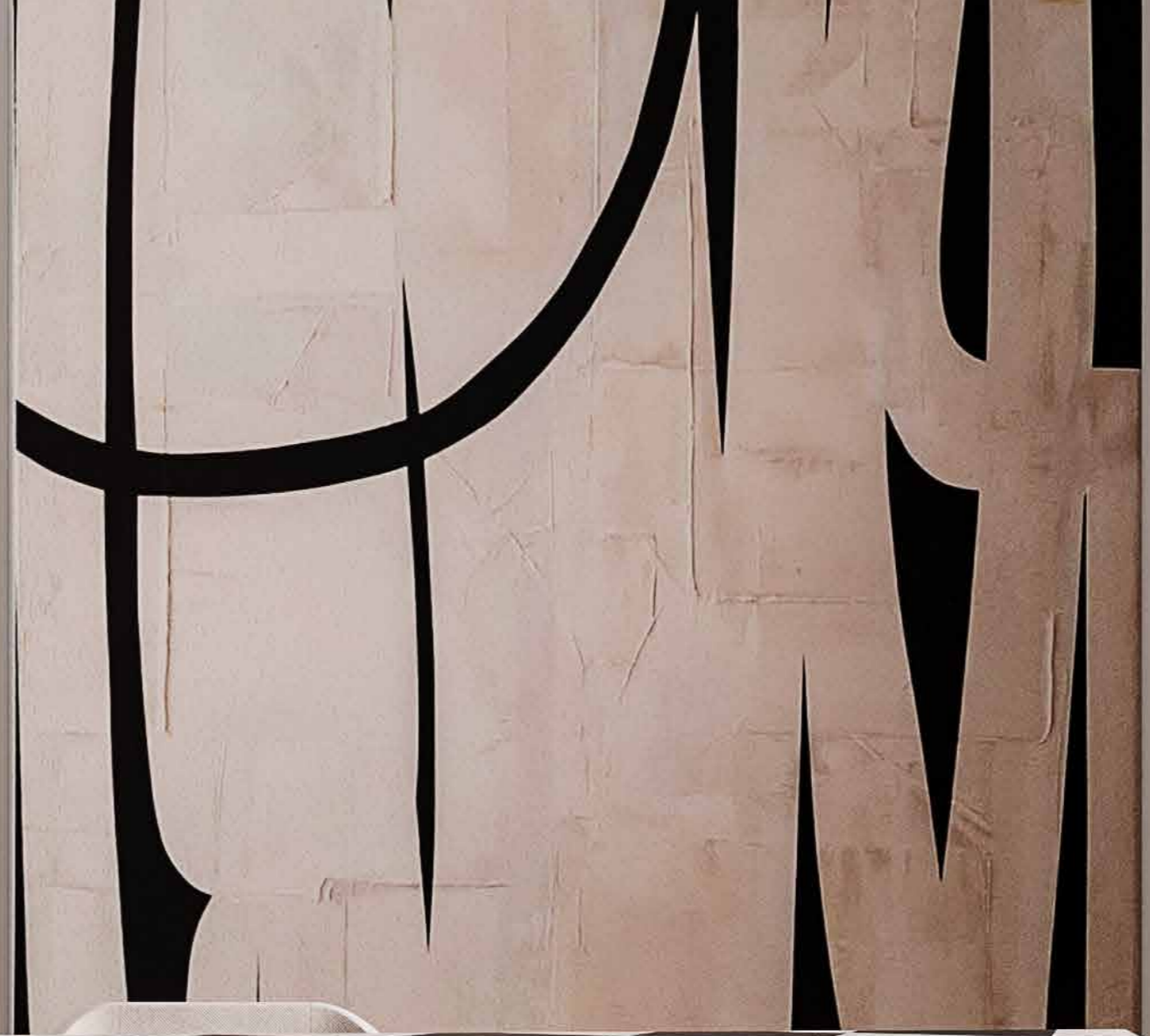
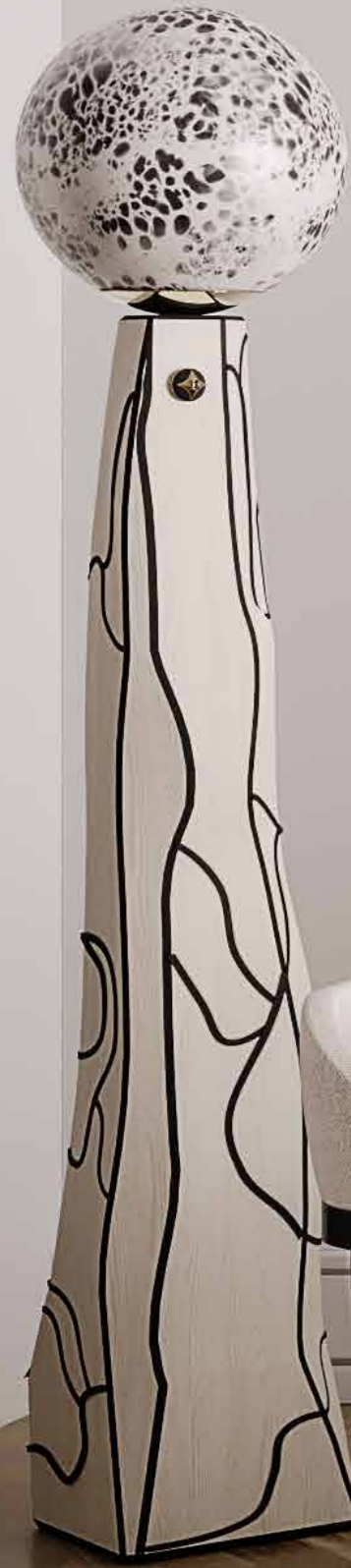
Dimensions
(cm) W: 70 | D: 70 | H: 78
(in) W: 27,6 | D: 27,6 | H: 30,7

DINING TABLE

Mate



Amidst the hushed anticipation of a chess encounter, where each maneuver unfolds a saga and every choice bears the weight of fate, resides the essence of the Mate dining table. It embodies the intense pause of strategy, the cerebral rotation of the board, and the foresight that crowns the noble game.





Bablanç



THE STRATEGIC

Ensemble Dining Table

The Mate table is the embodiment of tactical acumen materialized. Its tableau, an intricate meld of white and black ash veneers, mirrors the alternating squares of the chess arena.

Its lustrous lacquer invites interaction as decisively as the definitive placement of a chess piece upon the board. The Mate transcends its role as a mere furnishing to become a forum of exchange, a nexus for the interplay of intellect where the diverse gambits of existence are meticulously mapped, beyond the immediate, conjuring triumphs yet to unfold.



Name
Dining Table Mate

Top
Patchwork of white ash veneer,
black ash veneer and polished
brass.

Base
Wood, chess pieces made from
solid aluminum, lacquered in black
and white, and solid brass.

Personalization
Available.

Dimensions
(cm) W: 330 | D: 130 | H: 78
(in) W: 129,9 | D: 51,2 | H: 30,7

DINING TABLE

Plié



Inspired by the fluid elegance of classical ballet, the Plié Dining Table captures the essence of balance and precision seen in the dancer's plié movement. The table's polished brass base, sculpted like the legs of a dancer, rises with graceful strength, supporting the weight of the expansive marble top as effortlessly as a ballet dancer holds their posture.



A BALLET OF

Structure & Form

The Plié table is more than just a dining surface; it is a harmonious blend of art and function, paying tribute to the beauty of movement frozen in time.

Whether positioned at the center of a formal dining room or serving as an artistic statement in a more intimate space, the Plié Dining Table transforms any gathering into a graceful performance. It is an ode to the artistry of movement and the perfect marriage of elegance and strength in design.





Name
Dining Table Plié

Top
Carrara marble.

Personalization
Available.

Base
Polished brass.

Dimensions
(cm) W: 240 | D: 130 | H: 78
(in) W: 94,5 | D: 51,2 | H: 30,7

DINING TABLE

Pearl



Inspired by the natural balance and beauty of stacked stones and cairns, the Pearl Dining Table celebrates the harmony and equilibrium found in nature. This striking table reflects the timeless beauty of pearls, with its central column reminiscent of carefully balanced stones, symbolizing both strength and elegance.



“

بِسْمِ اللَّهِ الرَّحْمَنِ الرَّحِيمِ
بِسْمِ اللَّهِ الرَّحْمَنِ الرَّحِيمِ
بِسْمِ اللَّهِ الرَّحْمَنِ الرَّحِيمِ

”



THE PEARL OF
Nature Dining Table

The alternating spheres of polished marble, textured wood and gleaming metal create a rhythmic, sculptural base, representing the stacked stones that guide pathways through nature.

The Pearl Dining Table becomes the centerpiece of any dining space, merging the elements of nature into a functional and artistic design. It brings both tranquility and sophistication to every gathering, enhancing the experience with its unique, nature-inspired form.





Bablanc



Name
Dining Table Pearl

Top
Patchwork of walnut
wood veneer.

Base
Polished brass, Breccia Capraia
marble, solid walnut wood, and
a lacquered finish.

Personalization
Available.

Dimensions
(cm) W: 150 | D: 150 | H: 74
(in) W: 59,1 | D: 59,1 | H: 29,1

DINING TABLE

La Dance



Inspired by the fluid elegance of movement and the artistic brilliance of Henri Matisse's "La Danse," the La Dance Dining Table captures the essence of rhythm, motion, and refined beauty.



Bablan



A SYMPHONY IN

Design

The polished brass base, intricately carved with flowing lines, mirrors the dynamic curves of a dance, creating a harmonious visual rhythm.

La Dance is more than just a table; it invites gatherings that embody the same harmony and fluidity of movement. This artistic masterpiece becomes the centerpiece of any room, where conversations and moments flow as naturally as the dancers in Matisse's iconic work. A true blend of art and craftsmanship, the La Dance Dining Table offers an immersive experience in both beauty and function.



Name

Dining Table La Dance

Top

Carrara White marble with a high-gloss white lacquered sub-top.

Base

Polished stainless steel and Polished brass.

Personalization

Available.

Dimensions

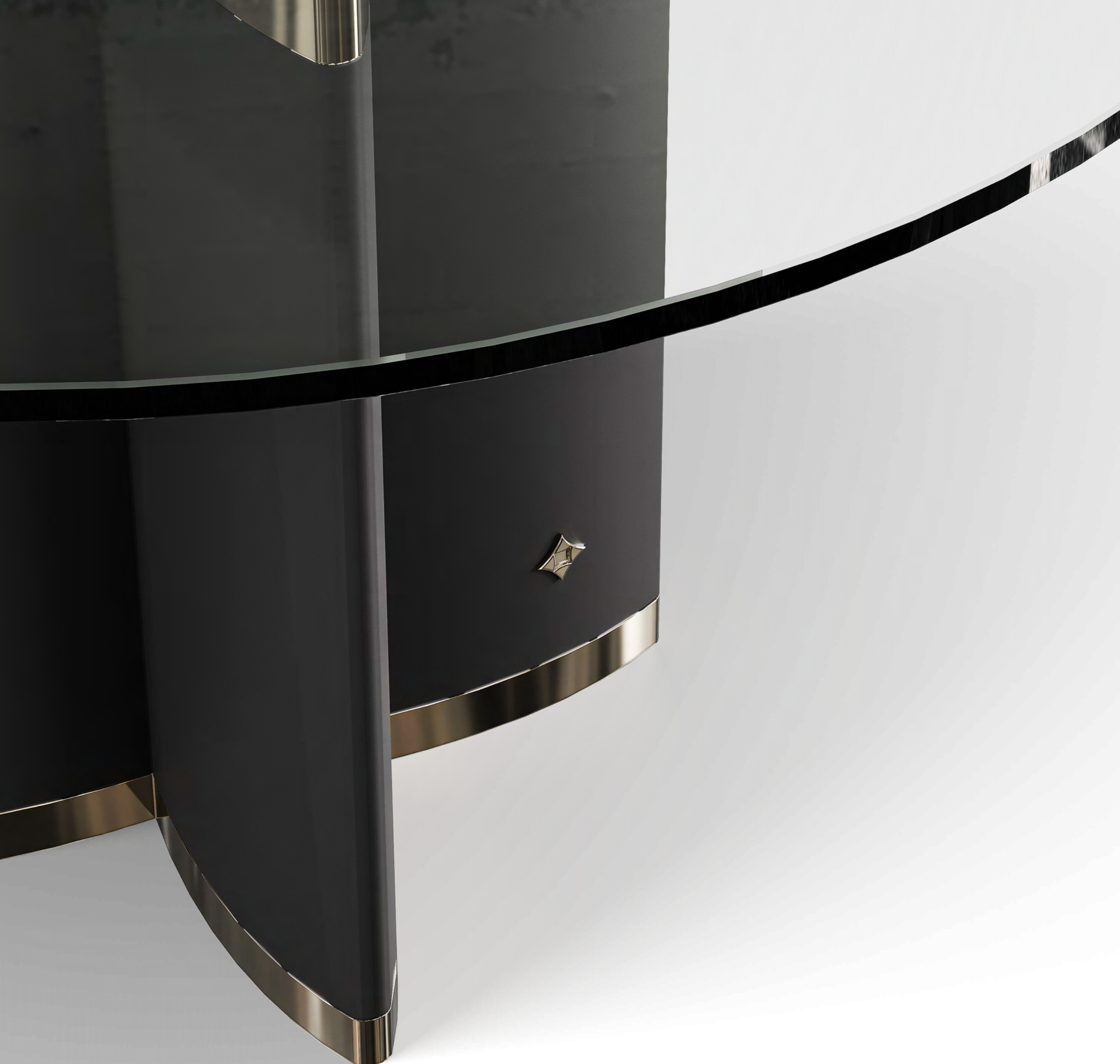
(cm) W: 260 | D: 120 | H: 76
(in) W: 102,4 | D: 47,2 | H: 29,9

DINING TABLE

Flower



Inspired by the graceful form of a flower and the star motif from Bablanc's logo, the Flower Dining Table brings together nature's elegance and modern design. With a sleek glass top resting upon a sculptural base, this table captures the balance between beauty and structure.



“

في هذا العالم من هذا العالم من هذا العالم
في هذا العالم من هذا العالم من هذا العالم
في هذا العالم من هذا العالم من هذا العالم
في هذا العالم من هذا العالم من هذا العالم

”



Name

Dining Table Flower

Top

Clear glass.

Base

Black lacquered and
polished brass.

Personalization

Available.

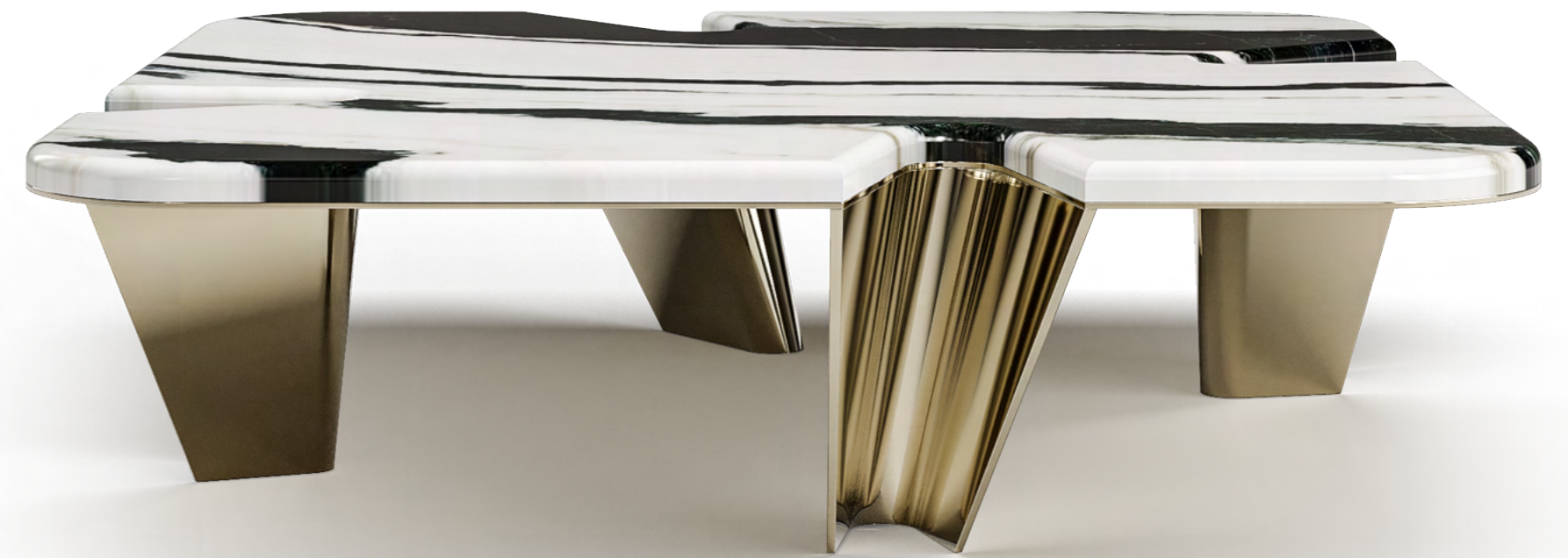
Dimensions

(cm) W: 120 | D: 120 | H: 76

(in) W: 47,2 | D: 47,2 | H: 29,9

CENTER TABLE

Tréfle



The Tréfle Center Table draws inspiration from the graceful geometry of a four-leaf clover, or "tréfle" in French. Its sculptural design, with overlapping marble tops, reflects the natural symmetry found in nature's patterns while showcasing the precision of modern craftsmanship.



Babanc



NATURE'S GEOMETRY IN

Motion

**Supported by stainless steel legs,
the Tréfle balances the organic veining
of marble with the sleekness of
metallic accents.**

This combination of materials brings forth a dynamic visual where the solidity of stone meets the fluidity of metal, creating an elegant interplay of grounded strength and airy lightness.



Name
Center Table Tréfle

Top
Panda marble stone.

Base
Polished golden stainless steel.

Personalization
Available.

Dimensions
(cm) W: 120 | D: 120 | H: 33
(in) W: 47,2 | D: 47,2 | H: 13,0

CENTER TABLE

Guernica



In the quietude of introspection, the Guernica center table stands as a powerful homage to the emotive force of art.
Drawing inspiration from Pablo Picasso's stirring masterpiece, the table itself becomes a silent storyteller



THE TESTAMENT OF

Time Center Table

Crafted with polished and oxidized brass, the table presents a visual juxtaposition that parallels the stark contrasts found in Picasso's "Guernica".

This center table encapsulates the complexities of the human saga—the intertwining of fragility and strength, the tumult of existence, and the resilience of humanity. It stands firmly, much like Guernica in the annals of history, beckoning observers to a moment of contemplation, to grapple with life's profound queries.





Name
Center Table Guernica

Structure
Structure in solid wood coated
with polished and oxidized brass.

Personalization
Available.

Dimensions
(cm) W: 142 | D: 120 | H: 37
(in) W: 55,9 | D: 47,2 | H: 14,6

CENTER TABLE

Moon



The Moon Center Table encapsulates the serene beauty of the lunar cycle, with layered, crescent-shaped marble tops delicately overlapping to create depth and intrigue. Inspired by the phases of the moon, this design brings celestial elegance into any space.



AN ODE TO

Celestial Wonder

Polished marble surfaces rest upon a wooden base, creating a harmonious blend of natural materials that elevates its refined aesthetic.

The Moon Center Table is a poetic tribute to the dance of the cosmos—capturing the stillness and wonder of a moonlit night within the rhythm of everyday life.





Name
Center Table Moon

Top
Breccia Capraia marble.

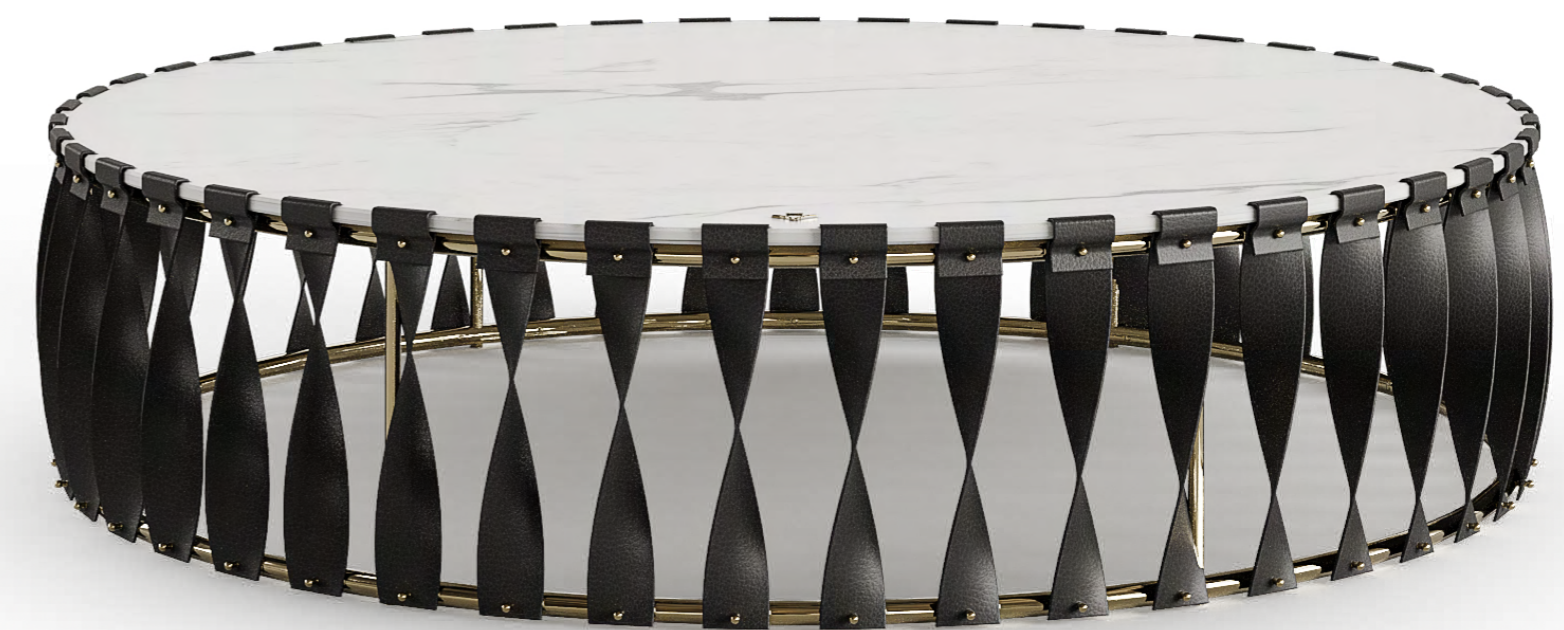
Base
Walnut wood.

Personalization
Available.

Dimensions
(cm) W: 120 | D: 120 | H: 36
(in) W: 47,2 | D: 47,2 | H: 14,2

CENTER TABLE

Bonzo



Inspired by the essence of percussion and the legendary drummer John Bonham, the Bonzo Center Table harmonizes structure and sophistication in a truly unique piece. Like the pulsating beat of a drum, this table exudes both power and subtle artistry, with interwoven black leather straps encircling a marble top, evoking a sense of rhythm and fluidity.



Bablan



THE RHYTHM OF

Design & Craftsmanship

The meticulously crafted straps, accented with polished stainless steel, play with light and shadow, enhancing the dynamic flow of the table's design.

This interplay of textures reflects the balance between strength and elegance, much like the controlled power of a master drummer. Every element of the Bonzo Table pays homage to the percussive instruments that are fundamental to contemporary music, combining raw energy with refined grace.



“
This is a beautiful
table that is perfect
for a modern
interior.”

Name
Center Table Bonzo

Top
White Carrara marble.

Base
Polished golden stainless
steel and leather.

Personalization
Available.

Dimensions
(cm) W: 102 | D: 102 | H: 25
(in) W: 40,2 | D: 40,2 | H: 9,8

CENTER TABLE

Flower



The circular marble top reflects the timeless beauty of blossoming petals, featuring intricate veining that mimics organic patterns found in nature. Supported by a sturdy yet gracefully curved black and gold base, this table brings a harmonious balance to any living space.





Name

Center Table Flower

Top

Calacatta marble.

Base

Black lacquered and
Polished brass.

Personalization

Available.

Dimensions

(cm) W: 100 | D: 100 | H: 36

(in) W: 39,4 | D: 39,4 | H: 14,2

SIDE TABLE

Eluarde



The Eluarde side table is a tribute to the poetic and surreal beauty found in the works of Paul Éluard, where art transcends function to become an evocative piece of sculptural expression. The base, delicately shaped like human hands carved from Carrara marble, embodies both strength and creativity.

“

Hand sculpture in white marble with a gold-plated metal rod inserted into the wrist. The hand is shown in a relaxed, slightly curled position. A small, gold-plated metal star-shaped ornament is attached to the back of the hand. The sculpture is set against a plain white background.

”







Name
Side Table Eluarde

Structure
Carrara marble.
Polished gold plated brass.

Personalization
Available.

Dimensions
(cm) W: 50 | D: 43 | H: 50
(in) W: 19,7 | D: 16,9 | H: 19,7

SIDE TABLE

La Dance



Mirroring Matisse's artistry in orchestrating diverse silhouettes into a unified visual symphony, the La Dance side table melds aesthetic appeal with practicality in an elegant symbiosis.



THE RHYTHMIC ECHOES

Side Table

Amidst the pantheon of expressive masterpieces, the side table *La Dance* by Bablanc stands as an animated salute to Henri Matisse's renowned depiction of kinetic revelry and joie de vivre.

Crafted in a harmonious round silhouette, the table mirrors the boundless and cohesive movements central to the dance. Its plane an arena where the shimmer of polished metal graced by subtle patination cavorts with chiaroscuro, reminiscent of Matisse's bold exploration of form and chromatic intensity.





Name
Side Table La Dance

Structure
Polished blue glaze stainless steel
with a gold finish.

Personalization
Available.

Dimensions
(cm) W: 50 | D: 50 | H: 55
(in) W: 19,7 | D: 19,7 | H: 21,7



SIDE TABLE

Garçon



Inspired by the classic charm of a waiter's refined service, the Garçon side table brings a blend of industrial flair and sophisticated design. Its weathered stainless steel base is reminiscent of the timeless dedication and strength of a skilled garçon.





Bablan



Name
Side Table Garçon

Structure
Veneered in marquetry.
Hammered brass.

Personalization
Available.

Dimensions
(cm) W: 65 | D: 65 | H: 50
(in) W: 25,6 | D: 25,6 | H: 19,7

SIDE TABLE

Pearl



Inspired by the harmony and equilibrium found in nature, the Pearl side table is a reflection of both balance and aesthetic beauty. Drawing from the concept of stacked stones, or Cairns, this table's design mimics the natural formations that guide paths and symbolize grounding.



“

هذا التصميم هو نتاج تعاوننا بين
التصميم الحديث والتراث العربي
الذي نحرص على دمجه في كل
منتجاتنا لتعكس هويتنا الثقافية

”



A TRIBUTE TO

Balance and Beauty

At the heart of this design lies a pearl-like sphere, which adds a touch of luxury and representing the perfect blend of nature's elegance and artistic refinement.

The Pearl side table isn't just a functional piece—it's a statement of harmony, a blend of form, function, and the natural world. Whether placed as an accent piece in a living space or as a central element in a more intimate setting, Pearl brings both a sense of tranquility and sophistication, enhancing the ambiance of any room with its bold yet serene presence.





Name
Side Table Pearl

Structure
Nero Marquina marble top.
Gold plated brass.
Rosso Alicante marble.
Black and white lacquered.

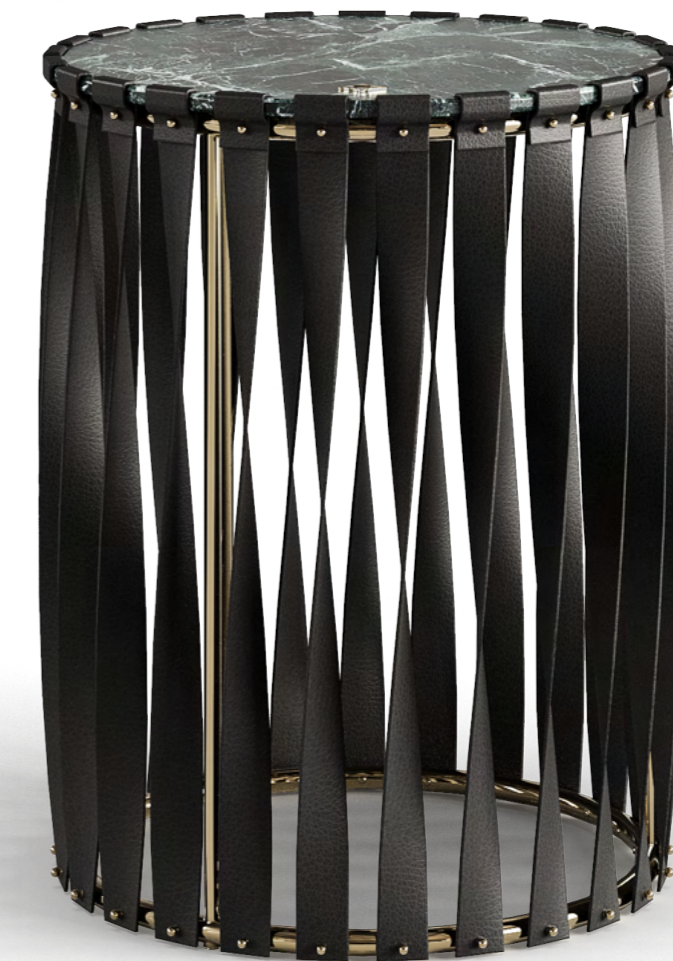
Personalization
Available.

Dimensions
(cm) W: 54 | D: 54 | H: 50
(in) W: 21,3 | D: 21,3 | H: 19,7



SIDE TABLE

Bonzo



Inspired by the dynamic energy of percussion instruments, the Bonzo side table reflects the power and rhythm found in contemporary music. Named after the legendary Led Zeppelin drummer John Bonham, renowned for his unmatched speed, power, and groove, this piece captures the essence of musicality in its design.



THE RHYTHM OF

Symmetry & Strength

The cylindrical form is wrapped in interwoven leather strips, creating a sense of movement and flow, while the polished marble top adds an element of elegance.

This combination of textures—soft leather and cool stone—strikes a perfect harmony, much like the blend of precision and passion in music. Bonzo serves not just as a functional side table; it is also a testament to the artistry of design.



Name

Side Table Bonzo

Structure

Guatemala green marble and
Bianco-Carrara. Polished
brass and leather.

Personalization

Available.

Dimensions

Bonzo 38

(cm) W: 38 | D: 38 | H: 50

(in) W: 15 | D: 15 | H: 19,7

Bonzo 60

(cm) W: 60 | D: 60 | H: 42

(in) W: 23,6 | D: 23,6 | H: 16,5

SIDE TABLE

Flower



The Flower side table is inspired by the graceful form of a blooming flower, with its base subtly reflecting the iconic star from the Bablanc logo. The delicately veined marble top rests atop a sculptural base finished in luxurious black lacquer, complemented by polished brass accents.



“

Il est très agréable de travailler
dans un environnement agréable et
de rencontrer des personnes agréables.

”



Bablanc



Name
Side Table Flower

Structure
Calacatta marble.
Black lacquered and
polished brass.

Personalization
Available.

Dimensions
(cm) W: 50 | D: 50 | H: 50
(in) W: 19,7 | D: 19,7 | H: 19,7

CONSOLE

Chemin



Echoing the Chemin de Fer Métropolitain, the Chemin console salutes the grand voyage and the splendor of reaching one's destination. It extends an offer to engage in the daily ballet of grace and introspection, where the crossroads of artistry, heritage, and metropolitan cadence meet.

“

هذا التصميم من بابلانس هو تصميم
للصناعات الحديثة التي تتميز
بالتصاميم المبتكرة والمواد
الجديدة التي تستخدم في
التصميم الداخلي.

“





Bablanc



Name
Console Chemin

Structure
Polished stainless steel with gold plating.
Walnut wood veneer. Poplar root veneer.
Walnut root veneer. White maple veneer.
Partridge eye veneer.

Personalization
Available.

Dimensions
(cm) W: 155 | D: 45 | H: 90
(in) W: 61 | D: 17,7 | H: 35,4

CONSOLE

Thierry



The Thierry Console introduces modernist geometry in a sculptural form that commands attention. Inspired by the artistry of François Thierry, an influential organ builder, this piece reflects the precision and grandeur of musical craftsmanship.



“

Illegible text block, possibly a quote or description.

“



Bablanc



Name

Console Thierry

Personalization

Available.

Structure

Black lacquered.

Gold-plated brass accessories.

Dimensions

(cm) W: 160 | D: 40 | H: 90

(in) W: 63 | D: 15,7 | H: 35,4

CONSOLE

Snake



The Snake Console slithers into spaces with an air of mystery and sophistication. Inspired by the sleek movements of a serpent, its marble top appears to coil with intent, held delicately by slender, metallic details. A brass snake handle gracefully adorns the edge, further emphasizing its sinuous appeal.



“

The design of the table is a perfect blend of modern and traditional styles. The marble top is a beautiful white with dark veining, and the dark wood base is a rich, warm tone. The snake-shaped finial is a unique and eye-catching detail that adds a touch of elegance and sophistication to the piece.

”



Name
Console Snake

Structure
Walnut wood.
Bianco-Carrara marble.
Brass.

Personalization
Available.

Dimensions
(cm) W: 160 | D: 47 | H: 85
(in) W: 63 | D: 18,5 | H: 33,5



CONSOLE

Flower



Like a blossoming floral motif that brings life to a space, the Flower Console stands as an embodiment of natural grace paired with meticulous craftsmanship. Its base, clad in luxurious black leather and punctuated with golden stainless steel details, evokes the elegance of a blooming flower stem gracefully supporting the weight of the world above.



“

تتميز بتصميمها العصري والراقي،
وتتوافق مع كافة ديكورات
البيوت الحديثة.

”



Bablanc



Name

Console Flower

Structure

Calacatta marble.
Base coated with leather
and polished brass.

Personalization

Available.

Dimensions

(cm) W: 140 | D: 35 | H: 86
(in) W: 55,1 | D: 13,8 | H: 33,9

SIDEBOARD

Pendulum



The Pendulum chest transcends the role of simple storage, it stands as a representation of life's consistent tempo and a centerpiece of reliability in the home. It embodies the expectation that time will persist, unfaltering and precise, with each day cascading predictably into the next.





Name

Sideboard Pendulum

Structure

Solid wood structure covered in leather, gold-plated brass handles and lacquered drawers.

Personalization

Available.

Dimensions

(cm) W: 210 | D: 53 | H: 100

(in) W: 82,7 | D: 20,9 | H: 39,4

“

“The design of the Sideboard Pendulum is a perfect blend of modern and traditional elements. The curved, overlapping drawers create a dynamic, sculptural effect that is both functional and aesthetically pleasing. The use of leather, gold-plated brass handles, and lacquered drawers adds a touch of luxury and elegance to the piece. The Sideboard Pendulum is a versatile piece of furniture that can be used as a sideboard, a console table, or a decorative centerpiece in any room. It is a true masterpiece of design and craftsmanship.”

”

SIDEBOARD

Pigalle



Just as Pigalle is a melting pot of creative expression, this sideboard draws inspiration from a rich tapestry of color, pattern, and texture, bringing an artistic flair to any interior space.



THE SYMPHONY OF
Colors Sideboard

**In the heart of Paris' eclectic Pigalle district,
where art, culture, and fashion collide,
the Pigalle Sideboard stands as a vibrant
homage to this dynamic energy.**

Much like the district it is named after, the Pigalle Sideboard is bold yet sophisticated, offering not just storage but a statement piece that commands attention. Each time you engage with its handles, you're reminded of the cultural richness and artistic vibrancy that makes Pigalle a timeless muse.





Name
Sideboard Pigalle

Structure
Structure in solid wood with high-gloss lacquer, covered with wallpaper and polished brass.

Personalization
Available.

Dimensions
(cm) W: 205 | D: 55 | H: 86
(in) W: 80,7 | D: 21,7 | H: 33,9

SIDEBOARD

Marie



The Marie sideboard embodies a perfect blend of dynamic elegance and architectural precision, drawing inspiration from the fluid beauty of Pont Marie in Paris. Like the rhythmic flow of the Seine beneath the bridge, the geometric design of the Marie sideboard features meticulously arranged lines and folds that seem to capture motion in stillness.



Bablanco



THE HARMONY OF

Movement Sideboard

The deep navy hues contrast strikingly with golden accents, creating a sophisticated dialogue between modernity and timeless craftsmanship.

More than just a functional piece, the Marie sideboard is a work of art. Its spacious interior offers ample storage, while the exterior becomes a bold focal point, imbuing any space with elegance and movement. It stands as a testament to the seamless fusion of design and utility, where the energy of form meets the serenity of purpose.



Name

Sideboard Marie

Structure

Structure in solid wood with high-gloss lacquer, marquetry of different veneers.

Personalization

Available.

Dimensions

(cm) W: 220 | D: 52 | H: 85

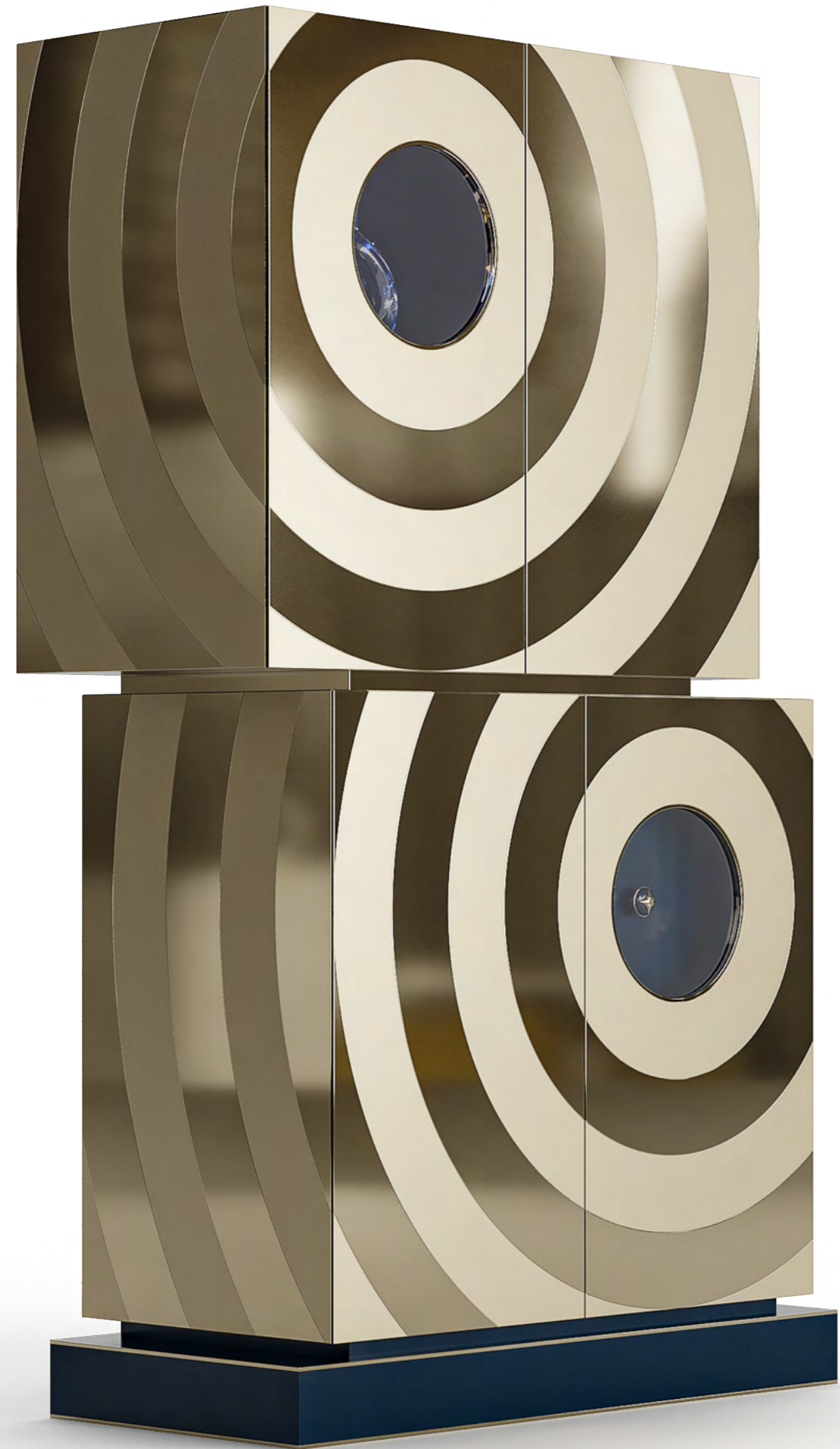
(in) W: 86,6 | D: 20,5 | H: 33,5

CABINET

Amulet



Designed with intricate attention to detail, the Amulet Cabinet serves as more than a functional storage piece; it becomes a guardian of your most precious belongings, echoing the ancient tradition of amulets that provide protection and fortune.



Name

Cabinet Amulet

Structure

Structure in wood covered with brass in different finishes, lacquered interior.

Personallization

Available.

Dimensions

(cm) W: 110 | D: 50 | H: 175

(in) W: 43,3 | D: 19,7 | H: 68,9

CABINET

MCQueen



Inspired by the iconic 2016 floral pattern of renowned fashion designer Alexander McQueen, the McQueen Cabinet is a seamless blend of fashion and function. Its leather exterior, adorned with intricately embossed floral motifs, captures the essence of McQueen's bold yet delicate approach to design, echoing the beauty of nature through fine craftsmanship.



Bablanc



Name
Cabinet McQueen

Personalization
Available.

Structure
Structure in wood covered with
a layer of perforated leather and
polished brass, walnut wood
interior, legs in polished brass.

Dimensions
(cm) W: 150 | D: 50 | H: 160
(in) W: 59,1 | D: 19,7 | H: 63,0

BOOKCASE

Chapeau



Inspired by the world of haute couture and the timeless allure of hat boxes, the Chapeau bookcase elevates storage into a fashionable art form. Its fluid curves, adorned with bold leopard fabric accents, capture the confidence and boldness of a piece that doesn't just complement a room but transforms it.



“

The Bablan watch is a
 perfect blend of modern
 design and traditional
 craftsmanship. It features
 a dark, textured dial with
 a gold-toned case and
 a crown with a four-pointed
 star logo.

”



Name
Bookcase Chapeau

Structure
Structure in golden stainless steel, drawers in wood covered with leather and fabric, brass handles with gold plating.

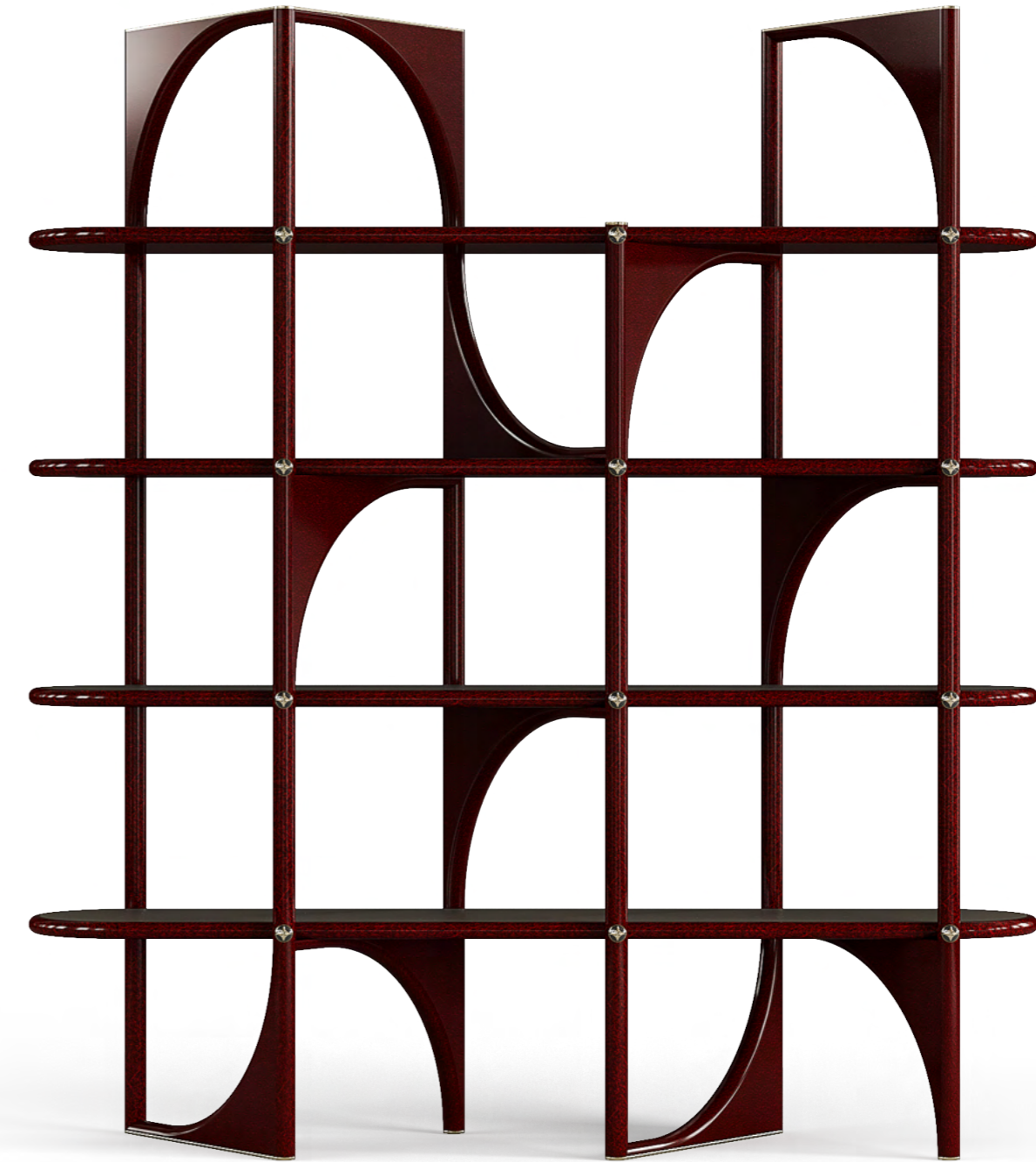
Personalization
Available.

Dimensions
(cm) W: 175 | D: 46 | H: 220
(in) W: 68,9 | D: 18,1 | H: 86,6



BOOKCASE

Triunfo



The Triunfo bookcase is a celebration of architectural grandeur, inspired by the iconic Arco do Triunfo. Its elegant arcs and defined lines evoke a harmonious blend of fluidity and structure, drawing the eye into its geometric beauty.



“

The first time I saw
 the bag, I was
 struck by the
 texture of the
 leather. It was
 a perfect blend of
 classic and modern.

”



Bablanc



Name
Bookcase Triunfo

Structure
Silver leaf with translucent finish and interior shelves lined with leather. Structure in solid wood, brass accessories with gold plating.

Personalization
Available.

Dimensions
(cm) W: 180 | D: 43 | H: 200
(in) W: 70,9 | D: 16,9 | H: 78,7

BOOKCASE

Golconda



Inspired by René Magritte's surreal masterpiece, Golconda, the Golconda bookcase embodies a poetic blend of art and functionality. Like the identical floating figures in Magritte's painting, this bookcase creates a harmonious balance between repetition and individuality.



“

The decorative panel on the shelf is a masterpiece of craftsmanship, featuring a detailed blue and white pattern that evokes a sense of traditional artistry. The gold-colored circular ornament adds a touch of elegance and luxury to the design. The overall aesthetic is clean and modern, making it a perfect addition to any contemporary interior.

”



Name
Bookcase Golconda

Structure
Structure in solid wood lacquered in white, brass handles with gold plating, drawers lined with leather and fabric, details in polished brass.

Personalization
Available.

Dimensions
(cm) W: 209 | D: 35 | H: 250
(in) W: 82,3 | D: 13,8 | H: 98,4



DESK

Bonaparte



The Bonaparte Desk channels the spirit of authority and leadership, mirroring the strategic brilliance of Napoleon Bonaparte himself. With its bold, commanding lines and powerful presence, this desk becomes a platform for those who aim to conquer their goals and steer their environment with precision.



Bablanc



Name
Desk Bonaparte

Structure
Structure in solid wood, brushed stainless steel with gold plating, leather, lacquered drawer interior, brass accessories with gold plating.

Personalization
Available.

Dimensions
(cm) W: 190 | D: 90 | H: 77
(in) W: 74,8 | D: 35,4 | H: 30,3

DESK

Snail



Inspired by the graceful and natural form of a snail's spiral, the Snail Desk captures the fluidity of movement and the beauty of organic design. Its structure mimics the continuous, smooth curve of a shell, symbolizing an endless flow of creativity and ideas.



Name
Desk Snail

Structure
Structure in solid wood, stainless steel with gold plating, marquetry with different veneers.

Personalization
Available.

Dimensions
(cm) W: 170 | D: 80 | H: 76
(in) W: 66,9 | D: 31,5 | H: 29,9



DESK

Flower



A tribute to nature's effortless elegance, the Flower Desk draws inspiration from the delicate balance and structured beauty of a blossoming flower. Just as petals unfurl to reveal intricate layers, this desk embodies a refined grace, blending sleek modernity with timeless luxury.



Name
Desk Flower

Structure
Structure in solid wood, stainless steel with gold plating, leather, and Carrara marble.

Personalization
Available.

Dimensions
(cm) W: 200 | D: 85 | H: 75
(in) W: 78,7 | D: 33,5 | H: 29,5



TABLE LAMP

New Look



A lustrous lacquered finish evokes the flawless sheen of a runway spectacle, a finish so reflective that it seems to waltz with the light. This lamp pays homage to the enduring charm of Dior's legacy, an emblem of a world yearning for renewal and elegance.



Name

Table Lamp New Look

Structure

Lampshade with fabric, lacquered base, and polished copper.

Personalization

Available.

Dimensions

(cm) W: 40 | D: 40 | H: 55

(in) W: 15,7 | D: 15,7 | H: 21,7



TABLE LAMP

Hat



The Hat table lamp is a playful homage to the world of haute couture, resembling a fluid and elegant brim of a hat frozen in mid-motion. Its marble base provides a foundation of timeless elegance, while the whimsical, flowing top is made from lustrous metal, reflecting the sophisticated yet spontaneous nature of fashion itself.



Name
Table Lamp Hat

Personalization
Available.

Structure
Brass lampshade with gold plating.
Carrara marble base.

Dimensions
(cm) W: 48 | D: 48 | H: 58
(in) W: 18,9 | D: 18,9 | H: 22,8

“

The first step is to identify the problem. This is often the most difficult part of the process, as it requires a deep understanding of the situation and the ability to see beyond the obvious. Once the problem is identified, the next step is to analyze it. This involves breaking the problem down into its constituent parts and understanding how they are interconnected.

After analysis, the next step is to generate potential solutions. This is a creative process that often involves brainstorming and exploring a wide range of possibilities. Once a few potential solutions have been identified, the next step is to evaluate them. This involves weighing the pros and cons of each solution and determining which one is most likely to be successful.

Finally, the chosen solution is implemented. This is often the most challenging part of the process, as it requires a commitment to the solution and the ability to overcome any obstacles that may arise. Once the solution is implemented, the final step is to evaluate the results. This involves monitoring the progress of the solution and making any necessary adjustments.

”

TABLE LAMP

Spike



The Spike table lamp offers a daring blend of bold design and refined luxury. Its striking golden spine, adorned with thorn-like spikes, cradles two glowing orbs, representing both sharp contrast and delicate balance.



Name

Table Lamp Spike

Structure

Gold-plated brass,
glossy white glass.

Personalization

Available.

Dimensions

(cm) W: 32 | D: 32 | H: 55
(in) W: 12,6 | D: 12,6 | H: 21,7

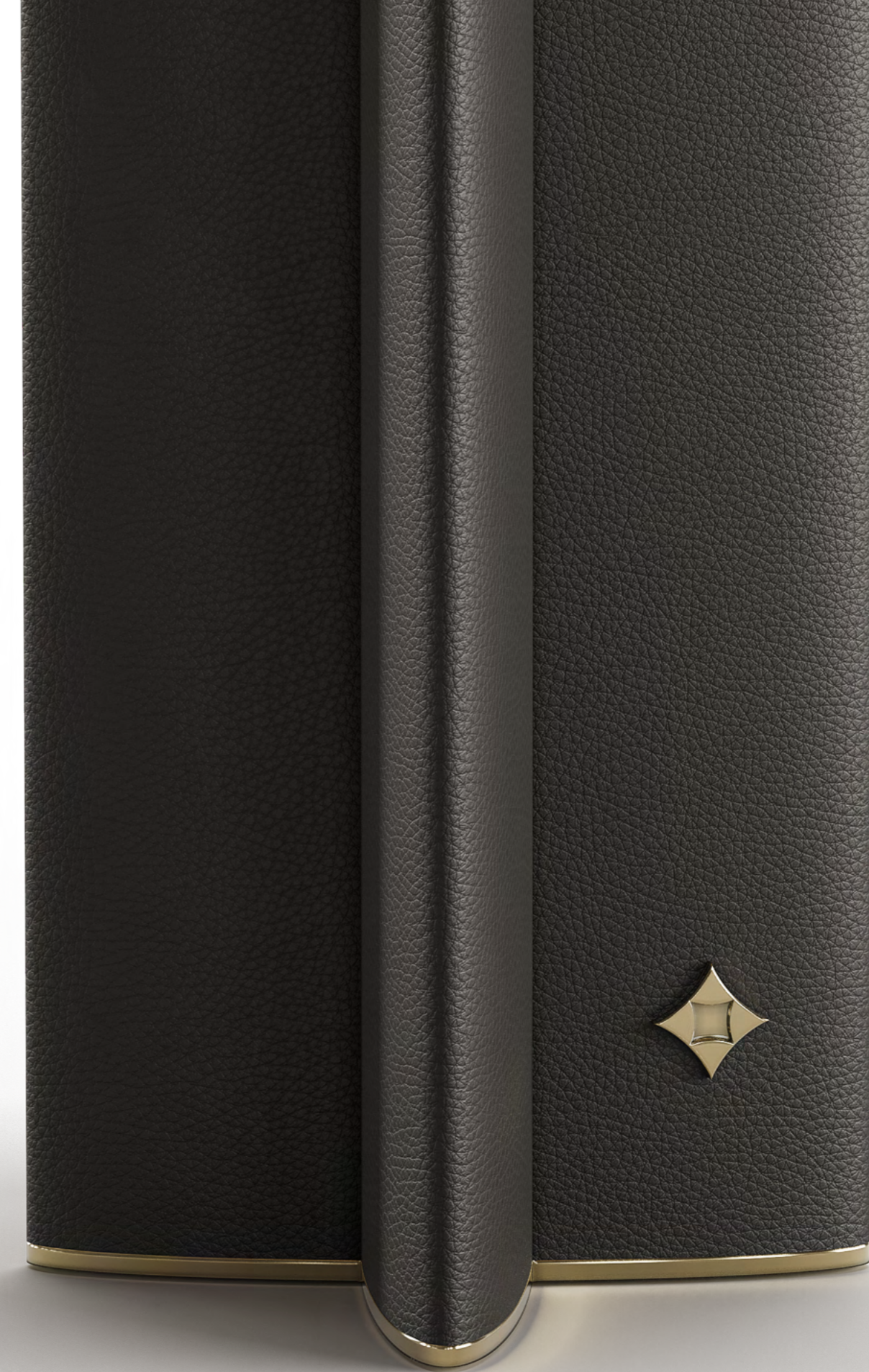


TABLE LAMP

Flower



The Flower table lamp draws inspiration from the natural beauty of blooming petals, reimagined through a lens of modern elegance. Its sleek and structured design features a sturdy base clad in premium leather, offset by metallic accents that shine with understated luxury.



Name

Table Lamp Flower

Structure

Lampshade fabric, gold-plated
brass, leather base.

Personalization

Available.

Dimensions

(cm) W: 35 | D: 35 | H: 65
(in) W: 13,8 | D: 13,8 | H: 25,6

FLOOR LAMP

Brutu



Crafted in the spirit of Art Brutu, the Brutu lamp is a celebration of unrestrained expression. Its silhouette juxtaposes the sleekness of contemporary gold-plated polished brass against the rustic charm of white eucalyptus and the striking statement of black patina.



Name
Floor Lamp Brutu

Structure
White glass, white eucalyptus wood,
and polished gold-plated brass.

Personalization
Available.

Dimensions
(cm) W: 43 | D: 43 | H: 180
(in) W: 16,9 | D: 16,9 | H: 70,9

FLOOR LAMP

Flower



The Flower floor lamp exemplifies a quiet elegance with its minimalistic silhouette that mirrors the refined beauty of nature. Its slender form, inspired by the delicate stem of a flower, brings a natural serenity to any space.



Name

Floor Lamp Flower

Structure

Lampshade fabric, gold-plated brass,
leather base.

Personalization

Available.

Dimensions

(cm) W: 50 | D: 50 | H: 170
(in) W: 19,7 | D: 19,7 | H: 66,9



FLOOR LAMP

Olympe



Inspired by the spirit of the Olympic Games, the Olympe floor lamp stands as a symbol of excellence and triumph. Its sleek, golden form echoes the power and grace of Olympic athletes, while the illuminated rings mirror the iconic Olympic symbol, representing unity and harmony.

Bablanco



Name

Floor Lamp Olympe

Structure

Fabric, gold-plated brass.

Personalization

Available.

Dimensions

(cm) W: 47 | D: 47 | H: 181

(in) W: 18,5 | D: 18,5 | H: 71,3



CHANDELIER

Louvre



Suspended in mid-air like a masterpiece in the Louvre, the Louvre Chandelier brings the essence of classical art into the realm of modern lighting. This striking piece transcends its function, evoking the spirit of Renaissance sculptures with its intricately carved forms.



“

سے پہلے ہی میں نے
اپنی زندگی میں یہ سب
کچھ ہی دنوں میں

”



Name

Chandelier Louvre

Structure

Structure in resin marble like and polished gold-plated brass.

Personalization

Available.

Dimensions

(cm) W: 43 | D: 43 | H: 180

(in) W: 16,9 | D: 16,9 | H: 70,9

CHANDELIER

Olympe



The Olympe Chandelier celebrates the union of timeless elegance and artisanal precision, seamlessly blending classical design elements with modern sophistication. Floating like suspended sculptures, its intricate tapestry motifs and delicate metallic frames come together to create a celestial dance of light and texture.



Bablanco



Bablanco



Name
Chandelier Olympe

Structure
Gold-plated brass, fabric.

Personalization
Available.

Dimensions
(cm) W: 50 | D: 50 | H: 150
(in) W: 19,7 | D: 19,7 | H: 59,1

“
The design of the chandelier is a perfect blend of modern and traditional elements. The use of gold-plated brass and fabric creates a sophisticated and elegant look. The abstract pattern on the fabric shade adds a touch of contemporary style. The overall design is both functional and decorative, making it a great choice for any interior space.”
”

P E N D A N T

Olympe



The Olympe Pendant brings a divine touch to any room, inspired by the timeless legends of Mount Olympus, where gods and goddesses ruled with grace and power.



Name

Pendant Olympe

Structure

Gold-plated brass, fabric.

Personalization

Available.

Dimensions

(cm) W: 33 | D: 33 | H: 100

(in) W: 13,0 | D: 13,0 | H: 39,4

WALL LAMP

Olympia



Embracing the dynamic elegance of classical architecture, the Olympia wall lamp serves as both an illuminating fixture and a sculptural statement. Inspired by the grandeur of the iconic Parisian music hall, Olympia combines the structured lines of textured brass with the soft glow of a marble sphere.



Name

Wall Lamp Olympia

Structure

Textured brass (casting), Alabaster / Onyx.
String.

Personalization

Available.

Dimensions

(cm) W: 180 | D: 8 | H: 63
(in) W: 70,9 | D: 3,1 | H: 24,8

WALL LAMP

Spike



Mesmerizing in its intricacy, the Spike wall lamp fuses strength and aesthetic grace, drawing from the rose's dual nature—its delicate petals in contrast with its protective thorns.



Bablanco



Name

Wall Lamp Spike

Structure

Gold-plated brass, glossy white glass.

Personalization

Available.

Dimensions

(cm) W: 12 | D: 15 | H: 51

(in) W: 4,7 | D: 5,9 | H: 20,1

WALL LAMP

Cronics



Minimalist yet commanding, the Cronics wall lamp embodies the philosophy that simplicity can often speak the loudest. Its circular design, hewn from brushed brass, captures the eternal elegance of the circle—a shape that symbolizes infinity and perfection.



Name

Wall Lamp Cronics

Structure

Brushed brass.

Personalization

Available.

Dimensions

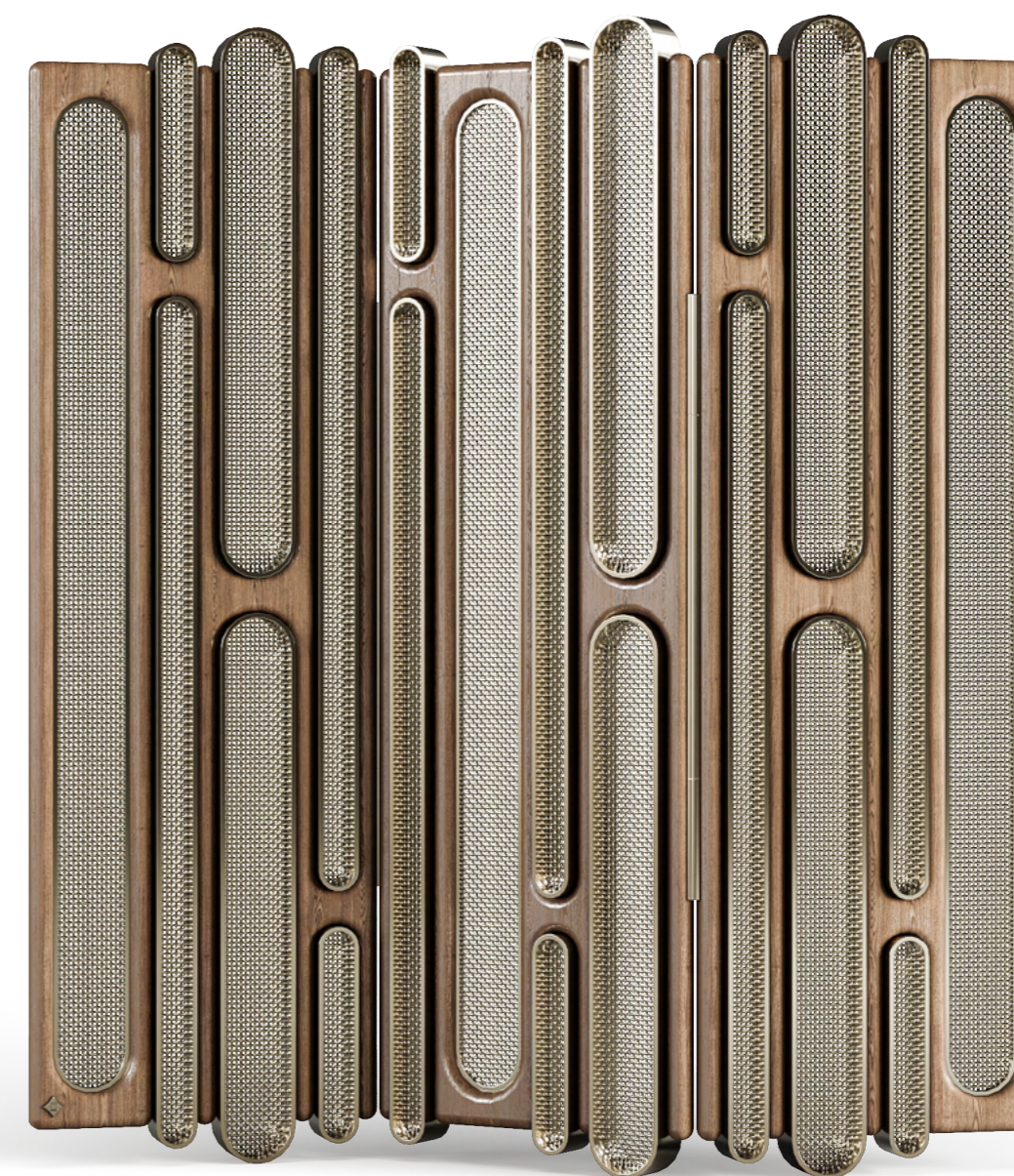
(cm) W: 32 | D: 9 | H: 37

(in) W: 12,6 | D: 3,5 | H: 14,6



FOLDING SCREEN

Marshall



Inspired by the iconic Marshall amplifiers, known for their warm, sharp, and powerful sound, the Marshall folding screen channels the energy of rock history and 1960s revivalism. These amplifiers were instrumental in shaping the sound of legends like Jimi Hendrix.



Name

Folding Screen Marshall

Structure

Solid wood, golden stainless steel
and rattan or metal mesh.

Personalization

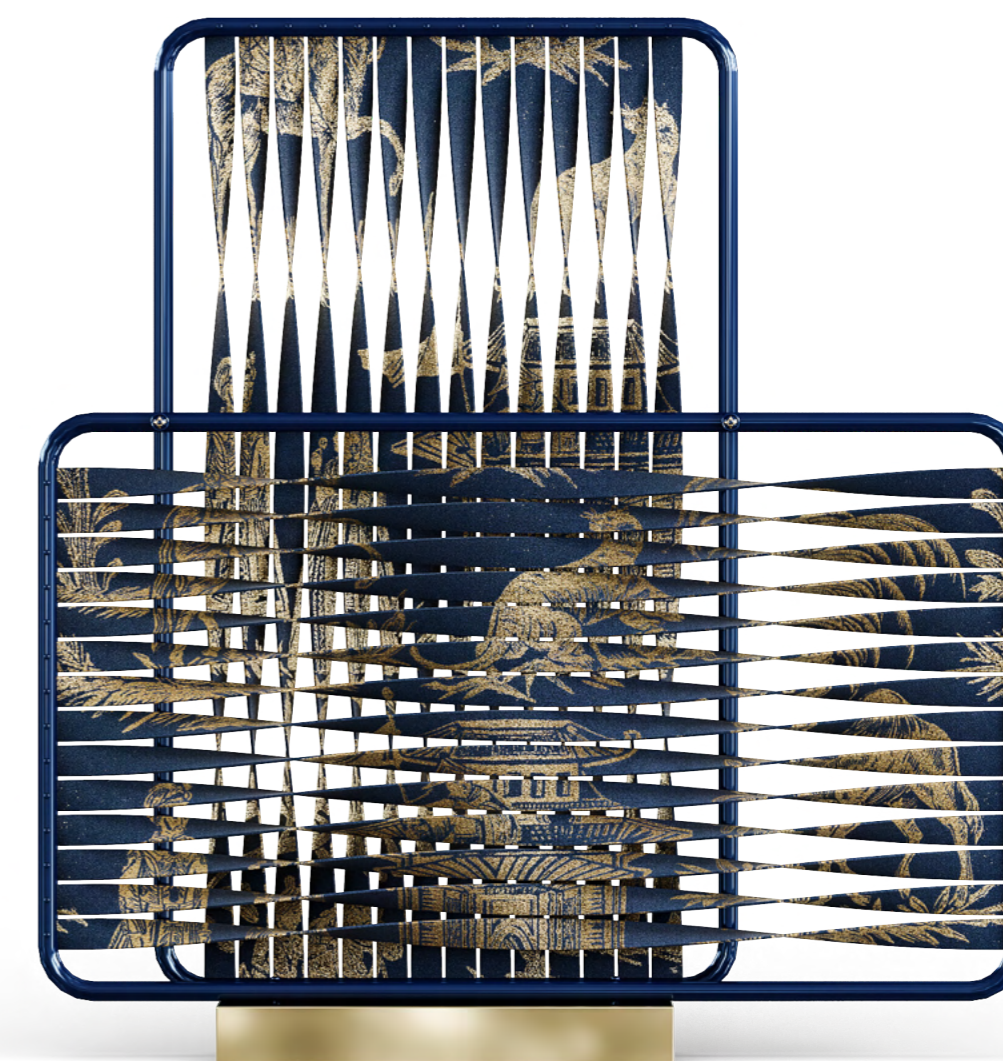
Available.

Dimensions

(cm) W: 180 | D: 9 | H: 190
(in) W: 70,9 | D: 3,5 | H: 74,8

FOLDING SCREEN

Harp



Inspired by the ancient and elegant harp, one of the oldest musical instruments, the Harp folding screen harmonizes form and function. Its fluid design mimics the rhythmic curves of a harp's strings, creating a captivating interplay between transparency and privacy.

Name

Folding Screen Harp

Structure

Stainless steel. Fabric and/or leather.
Polished brass base.

Personalization

Available.

Dimensions

(cm) W: 174 | D: 18 | H: 184
(in) W: 68,5 | D: 7,1 | H: 72,4



MIRROR

King Pavo



The King Pavo Mirror commands attention with its opulent display of metallic feathers. Inspired by the regal poise of the peacock, it captures the essence of nature's grandeur, as if each feather were meticulously placed by hand to highlight the untamed beauty of the world.



Name

Mirror King Pavo

Structure

Structure in solid wood, polished and textured brass with handcrafted gold plating.

Personalization

Available.

Dimensions

(cm) W: 120 | D: 6 | H: 130
(in) W: 47,2 | D: 2,4 | H: 51,2

MIRROR

Domino



The Domino Mirror is a celebration of balance and symmetry, where each reflection is guided by a sequence of refined precision. Drawing inspiration from the strategic play of dominoes, this mirror aligns with those who cherish order, harmony, and well-calculated aesthetics.



THE PRECISION OF

Pattern

Framed in alternating blocks of gold-plated polished stainless steel, its design speaks to the calculated beauty of life's interconnected decisions, much like the layout of a domino pattern falling into place.

This piece invites introspection, much like the game itself – a reminder that every move reflects our choices and that balance is key to creating a harmonious existence. The Domino Mirror transforms any space into a contemplative haven, where order meets elegance.



Name

Mirror Domino

Structure

Structure in solid wood, lacquered, polished brass with gold plating.

Personalization

Available.

Dimensions

(cm) W: 103 | D: 4 | H: 103
(in) W: 40,6 | D: 1,6 | H: 40,6



MIRROR

Petale



This mirror is more than a reflective surface – it serves as a window into a world of perpetual bloom, reminding us of nature's elegance. The Petale Mirror brings a sense of soft, natural beauty to any space, reflecting both light and life with every glance.



Name
Mirror Petale

Structure
Polished brass, fabric.

Personalization
Available.

Dimensions
(cm) W: 100 | D: 50 | H: 100
(in) W: 39,4 | D: 19,7 | H: 39,4



MIRROR

21



As a commanding feature in your personal haven, the mirror is a bold declaration of your narrative. It's an invitation to engage with life's uncertainties, to indulge in the play of probabilities, and to always project the most refined version of yourself.



THE EDGE OF

Reflection Mirror

Immerse yourself in an environment where every decision straddles the thrilling line between risk and strategy, and every reflection offers a deep dive into a life of cultivated risk-taking – this is the essence captured by the 21 mirror.

Drawing inspiration from the enigmatic allure of Blackjack, where audacity meets analytics, this mirror reflects the electrifying suspense hinging on the pivotal number 21 – the coveted score that tips the scales in the world's most opulent gambling halls.



Name
Mirror 21

Structure
Polished brass, black lacquered.

Personalization
Available.

Dimensions
(cm) W: 120 | D: 50 | H: 110
(in) W: 47,2 | D: 19,7 | H: 43,3



MIRROR

Crown



This mirror doesn't just reflect your image; it reflects the innate majesty that resides within every space it graces. It invites you to embrace your own narrative of refinement, where elegance meets legacy.



Name
Mirror Crown

Structure
Black lacquered, polished brass
with gold plating, leather.

Personalization
Available.

Dimensions
(cm) W: 116 | D: 80 | H: 140
(in) W: 45,7 | D: 31,5 | H: 55,1



B E D

Pleat



The Pleat bed is a masterful balance of texture and form, blending a sleek silhouette with the intricate detailing of pleats. Its headboard design draws inspiration from the elegance of haute couture, where fabric folds are elevated to an art form.



Name
Bed Pleat

Personalization
Available.

Structure
Wood covered with different densities of polyurethane and fibre, polished brass with gold plating, fabric.

Dimensions
(cm) W: 360 | D: 220 | H: 130
(in) W: 141,7 | D: 86,6 | H: 51,2



B E D

Alpes



Inspired by the majestic ridgelines of the Alps, the Alpes bed harmonizes minimalist geometry with timeless luxury. Its striking headboard, adorned with crisscrossed black lines over a muted fabric, creates a bold yet soothing contrast, evoking the serene beauty of snow-capped peaks etched against the horizon.



Name
Bed Alpes

Structure
Wood covered with different densities of polyurethane and fibre, fabric.

Personalization
Available.

Dimensions
(cm) W: 330 | D: 225 | H: 110
(in) W: 129,9 | D: 88,6 | H: 43,3

B E D

Diamond



The Diamond bed embodies the essence of luxury, inspired by the brilliance and allure of nature's finest gemstones. Its headboard features three sculpted diamond-shaped panels, exuding elegance and sophistication while offering an architectural statement to the bedroom.



Name
Bed Diamond

Personalization
Available.

Structure
Wood covered with different densities of polyurethane and fibre, polished brass with gold plating, fabric.

Dimensions
(cm) W: 360 | D: 235 | H: 120
(in) W: 141,7 | D: 92,5 | H: 47,2



B E D

Garde



Inspired by the architectural grandeur of the Pont du Gard, the Garde bed represents a perfect fusion of simplicity and modern elegance. Its clean lines and geometric shapes evoke a sense of balance and symmetry, reminiscent of the ancient Roman aqueduct's imposing structure.



Name
Bed Garde

Structure
Wood covered with different densities of polyurethane and fibre, fabric and gold-plated brass.

Personalization
Available.

Dimensions
(cm) W: 330 | D: 224 | H: 110
(in) W: 129,9 | D: 88,2 | H: 43,3

NIGHTSTAND

Snake



With its lustrous finishes and attention to detail, the Snake nightstand offers a refined presence, perfect for those seeking to infuse their space with a touch of opulence and mystique.



THE SNAKE

Nightstand

**Is a masterful blend of art and functionality,
with its sleek marble top and cast brass legs.
The true highlight is the intricately designed
snake embellishment wrapping around the front,
symbolizing wisdom and transformation.**

This piece reflects a bold yet sophisticated aesthetic, drawing
inspiration from nature while embodying modern luxury.





390

Bablanco

Name

Nightstand Snake

Personalization

Available.

Structure

White lacquered, Carrara marble, brass,
and cast brass with gold plating.

Dimensions

(cm) W: 70 | D: 45 | H: 52
(in) W: 27,6 | D: 17,7 | H: 20,5

391

NIGHTSTAND

Doric



Inspired by the ancient architectural columns that once upheld grand structures, the Doric nightstand brings both stability and elegance to the modern bedroom. With its unique, sculptural form, it features two circular tiers adorned with a marble top, seamlessly floating above a solid brass base.

Name

Nightstand Doric

Structure

Nero Marquina marble, walnut wood drawer interior, polished brass with gold plating.

Personalization

Available.

Dimensions

(cm) W: 60 | D: 50 | H: 46
(in) W: 23,6 | D: 19,7 | H: 18,1



NIGHTSTAND

Bogda



A statement piece that goes beyond functionality, the Bogda nightstand symbolizes an intersection of contemporary craftsmanship and timeless appeal, designed to elevate your space with a touch of understated luxury.



A SYMPHONY OF
Refined Design

Its sleek, rounded form is accentuated by a striking vertical brass detail, reminiscent of nature's raw beauty captured in an abstract form.

The high-gloss lacquer finish contrasts beautifully with the rich brass tones, creating a sophisticated look that effortlessly complements any modern bedroom.





Name

Nightstand Bogda

Structure

Wood covered with different densities of polyurethane and fibre, fabric. Details in gold-plated polished brass and gold-plated cast brass

Personalization

Available.

Dimensions

(cm) W: 65 | D: 40 | H: 52
(in) W: 25,6 | D: 15,7 | H: 20,5

BENCH

Passerelle



The Passerelle Bench offers a serene retreat, where smooth lines meet soft upholstery in a symphony of design. The gold stainless steel frame shines like the romantic locks that adorn the historic bridge, while the plush seat invites moments of quiet reflection or shared conversation.

“

Il faut savoir que le confort
est un concept très relatif.
C'est pourquoi il est important
de bien choisir son mobilier.
C'est ce que nous faisons.

“





Name

Bench Passerelle

Structure

Golden stainless steel, wood covered with different densities of polyurethane and fibre.

Upholstery

Dedar - Salicornia.

Personalization

Available.

Dimensions

(cm) W: 150 | D: 60 | H: 44

(in) W: 59,1 | D: 23,6 | H: 17,3

BENCH

Diamond



Inspired by the multifaceted brilliance of a diamond, the Diamond Bench offers a harmonious blend of bold geometry and luxurious craftsmanship. Its intricately quilted texture mirrors the precision of a cut gemstone, with each segment thoughtfully designed to reflect elegance.

“

بِسْمِ اللَّهِ الرَّحْمَنِ الرَّحِيمِ
الحمد لله الذي هدانا لهذا
الذي كنا لنهتدي لولا أن هدانا الله

”



Name
Bench Diamond

Structure
Wood covered with different densities of polyurethane and fiber, polished brass with gold plating.

Personalization
Available.

Dimensions
(cm) W: 160 | D: 55 | H: 35
(in) W: 63,0 | D: 21,7 | H: 13,8

Upholsetry
Natural Leather.



POUF

Urban



The Urban pouf encapsulates the essence of contemporary living, merging style and functionality into a versatile piece. Designed to fit seamlessly into modern environments, its minimalistic form is accentuated by the refined use of soft, premium fabric atop a structured base, finished with a sleek leather band.



Name
Pouf Urban

Structure
Wood covered with different densities of polyurethane and fibre, polished brass with gold plating, natural leather.

Upholsetry
Dedar - Salicornia

Personalization
Available.

Dimensions
(cm) W: 90 | D: 90 | H: 35
(in) W: 35,4 | D: 35,4 | H: 13,8

CHAISE LONGE

Dada



Whether adorned in a whimsical fabric print or a bold geometric, it invites the user to question the conventional and immerse themselves in a space that values creativity, originality, and comfort in equal measure.



Bablan



THE DADA

Chaise Longue

The Dada Chaise Longue, like its counterpart sofa, draws from the radical essence of Dadaism, challenging norms and embracing a creative rebellion in both form and function.

The geometric patterns of its fabric echo the chaotic spontaneity of the movement, while the sleek integration of its natural leather side panel, complete with gold-plated hardware, nods to Dada's fusion of art and practicality.



Name

Chaise Longue Dada

Structure

Wood covered with different densities of polyurethane and fiber, natural leather, gold-plated brass.

Upholstery

Pierre Frey - Arlina.

Personalization

Available.

Dimensions

(cm) W: 102 | D: 150 | H: 70

(in) W: 40,2 | D: 59,1 | H: 27,6



Sofa Dada



Sofa Davidson



Sofa Frog



Sofa Remi



Armchair Kevin



Armchair Frog



Armchair Rondó



Chair Passerelle



Chair Monceau



Chair Adam



Chair Rondó



Dining Table Mate



Dining Table Plié



Dining Table Pearl



Dining Table La Dance



Dining Table Flower



Center Table Tréfle



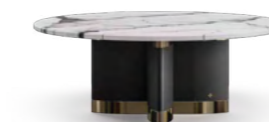
Center Table Guernica



Center Table Moon



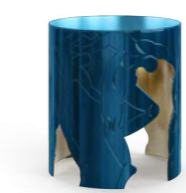
Center Table Bonzo



Center Table Flower



Side Table Eluarde



Side Table La Dance



Side Table Garçon



Side Table Pearl



Side Table Bonzo



Side Table Flower



Console Chemin



Console Thierry



Console Snake



Chandelier Olympe



Pendant Davidson



Wall Lamp Olympia



Wall Lamp Spike



Wall Lamp Cronics



Console Flower



Sideboard Pendulum



Sideboard Pigalle



Sideboard Marie



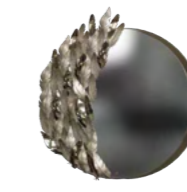
Cabinet Amulet



Folding Screen Marshall



Folding Screen Harp



Mirror King Pavo



Mirror Domino



Mirror Petale



Cabinet MCQueen



Bookcase Chapeau



Bookcase Triunfo



Bookcase Golconda



Desk Bonaparte



Mirror 21



Mirror Crown



Bed Pleat



Bed Alpes



Bed Diamond



Desk Snail



Desk Flower



Table Lamp New Look



Table Lamp Hat



Table Lamp Spike



Bed Garde



Nightstand Snake



Nightstand Doric



Nightstand Bogda



Bench Passerelle



Table Lamp Flower



Floor Lamp Brutu



Floor Lamp Olympe



Floor Lamp Flower



Chandelier Louvre



Bench Diamond



Pouf Urban



Chaise Long Dada

Materials & Finishes



Wood Venners



Walnut Veneer



Koto Tay 3073



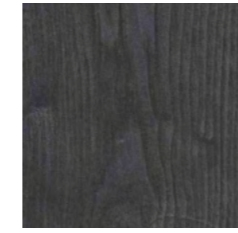
Palisander Veneer



Pau Santo Veneer



White Ash Veneer



Black Ash Veneer



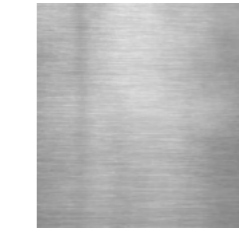
Polished Oxidized Brass



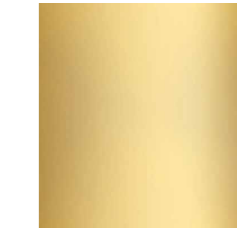
Matte Oxidized Brass



Polished Stainless Steel



Brushed Stainless Steel



Polished Brass Stainless



Brushed Brass Stainless Steel

Wood Venners



Walnut Root Veneer



Poplar Root Veneer



Bird Eye Veneer

Metallic Leafs



Gold Leaf



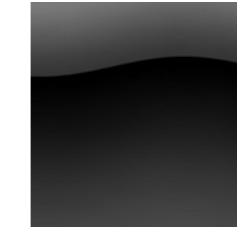
Silver Leaf



Red Transluents



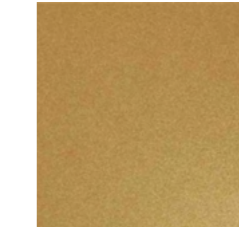
Matte Gold Stainless Steel



Polished Black Stainless Steel



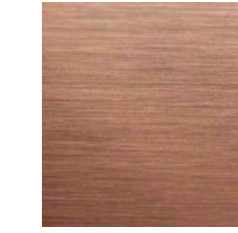
Polished Blue Stainless Steel



Inox Gold Plated

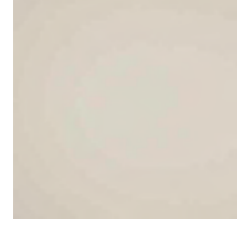


Polished Copper Stainless Steel



Brushed Copper Stainless Steel

Lacquers



Beige Lacquered



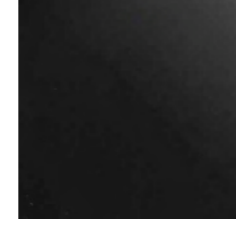
Blue Lacquered



Red Lacquered



White Lacquered



Black lacquered

Mirrors



Plain Mirror



Hammered Copper Stainless Steel

Fiberglasses

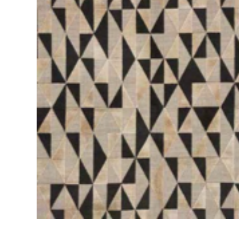


Marble Like

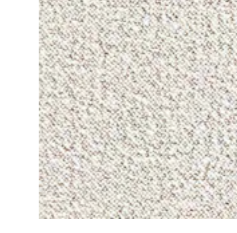
Fabrics



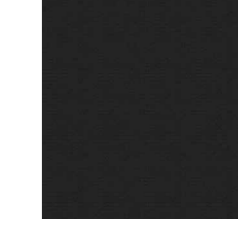
Mungo



Arlina



Karakorum



Adamo

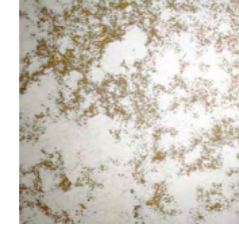
Glasses



Smoked Mirror



Bronze Mirror



Aged Mirror

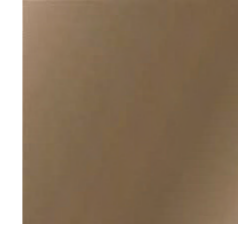
Glasses



Plain Glass



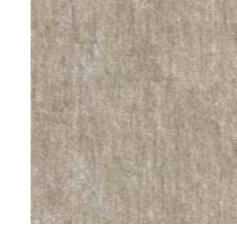
Smoked Glass



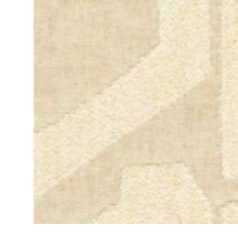
Bronze Glass



Salicornia



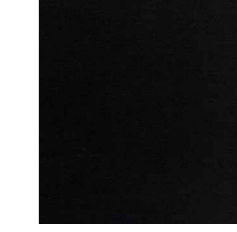
Belsuede



Eivissa



Pur Mohair



Derby



Gallieu

Marbles



Clear Glass

Marbles

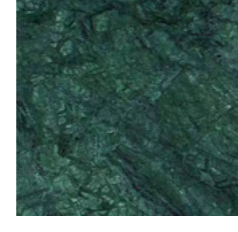


Carrara Marble

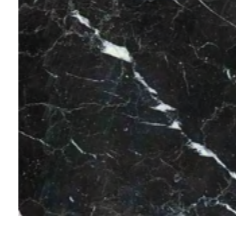


Estremoz Marble

Marbles



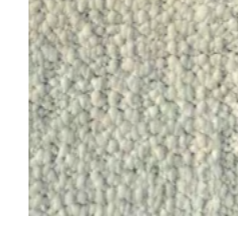
Guatemala Marble



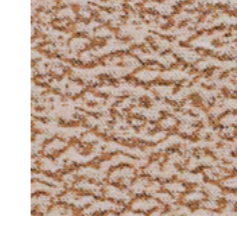
Nero Marquina Marble



Sahara Nair Marble

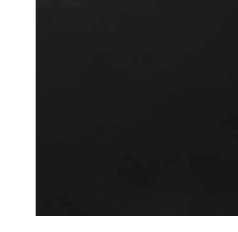


H&R 7267/1



Suede Gres

Leathers



Soul Black

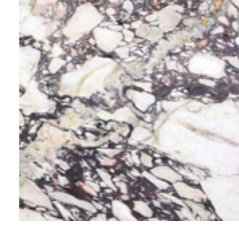
Marbles



Emperador Marble



Ross Alicante Marble



Breccia Capraia Marble

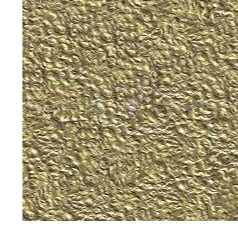
Metals



Polished Brass



Brushed Brass



Hammered Brass



Bablanc Headquarters

PORTUGAL

Rua dos Ourais, 90
4475-357 Nogueira - Maia

Phone

+351 916 700 866
+33 6 11 41 37 81

email

hello@bablanc.com
pb@bablanc.com

Social Media

facebook.com/bablancPT
instagram.com/bablanc_
linkedin.com/company/bablanc/
pinterest.com/Bablanc_/
snapchat.com/add/bablanc.com

©2024 Bablanc. ALL RIGHTS RESERVED

Images or text may not be used, reproduced and/or copied for any comercial, marketing or advertising without prior written approval of and agreement with **Bablanc**. The Reproduction of images and texts are permitted in press publications if shall expressly, and in a clear manner, mention and credit **Bablanc**.

Please be aware that the final product may differ from the 3D representations shown in this catalog.

www.bablanc.com



